

WELLBORN CABINET®

Care & Warranty Guide



Home
Concepts™



Aspire
CABINETRY™

About Our Product

I. THE BEAUTY OF DOOR MATERIALS



Cherry

Cherry is synonymous with luxurious cabinets. The rich red highlights give the wood a distinctive appearance. Cherry will occasionally have tiny pin knots, pitch pockets and very small, dark streaks of gum. These features have fascinated woodworkers for centuries.



Character Cherry

Character Cherry's unique characteristics are emphasized by randomly occurring various sized knots, pin knots, pitch pockets and small streaks of gum. Cluster knots and open knots could also be a feature. The amount of character will vary from each door making each kitchen unique.



Maple

Maple is widely used in the cabinetry industry. This wood species features a straight grain with several distinctive characteristics. These include unique figures such as bird's-eye, fiddle back, mineral streaks and curly grain patterns. Finely textured with a natural luster, this creamy-white to light reddish-brown wood is often used for cabinets and floors.



Character Maple

Character Maple's unique characteristics are brought out by randomly occurring, variously sized knots, pin holes, worm holes and tracks, gum and bark pockets, sugar tracks, heartwood and mineral streaks. Cluster knots and open knots could also be a feature. The amount of character marks will vary from each piece of wood making each kitchen unique.



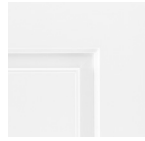
Oak

Authentic American red Oaks are open-pored and have grain patterns. Wellborn's manufacturing technology presents Oak with straighter grains than most cabinet lines, and our process minimizes the wide grains and reduces the widths of cathedrals in Oak.



Hickory

Hickory has distinctive contrasting colors from light to dark and strong grain characteristics. The texture of Hickory is open grained. Hickories by nature are heavy, hard, strong and stiff-producing durable cabinetry. Hickory is for homeowners desiring dramatic wood characteristics.



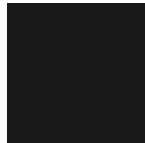
Wellcore MDF

Using high pressure and temperatures, MDF is formed by combining wood fibers with a wax resin binder to form panels. It is made of wood veneer. It is much more dense than normal particle board. This is a durable and tough wood product, commonly used in the construction industry.



Matte Laminate

Matte Laminate melamines have a super-matte finish with a silky smooth touch.



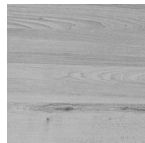
High Gloss Laminate

High Gloss laminates are created by laminating decorative paper to a MDF core then applying a high gloss finish to the outer panel and a matte finish to the inside panel.



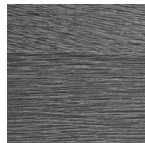
High Gloss Acrylic Laminate

High Gloss Acrylic laminates are pressed onto a high quality super-refined engineered MDF core with PUR glue. The high gloss acrylic has a mirror-like reflective surface.



Embossed Melamine

Embossed Melamine is a Thermally Fused Laminated or High Pressure Laminated surface with dual-sided textured grain. Embossed Melamine is a high-impact surface.



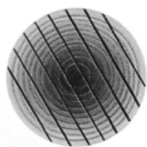
Heavy Textured Melamine

Heavy Textured Melamine is a deeply embossed thermo-structured surface that showcases a wood's natural ridges, which are accentuated by deep furrows that add texture to the laminated surface.



Aluminum

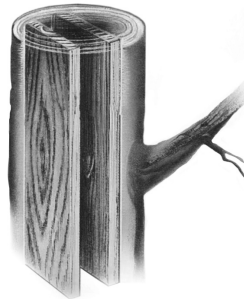
Aluminum is characteristically lightweight and has high reflectivity, enhancing the illumination in your home.



The solid hardwood furnishings and materials used in your cabinetry are made up of tiny pieces of wood. Each is unique and if you look carefully, you may notice natural variations in color. The lighter pieces were closer to the tree's bark, while the darker pieces were closer to its center.

All are equally strong and impart the beauty and value that make hardwoods second to none.

The unique grain patterns in solid hardwood are related to the tree's growth rings. The distinctive differences come about as the wood is prepared for use in your home.



Trees absorb minerals and other essential elements as they grow and prosper. You may see their traces in hardwood cabinets, flooring or furnishings. These natural characteristics let you know you are enjoying the authentic item and not an artificial wood imitation.

All trees grow limbs which fall to the forest floor as the tree matures. The tree trunk, however, will always have a knot where those limbs once were. Parts of that tree, knots and all, may find new life in your hardwood cabinetry. These natural markings are proof of your hardwood's origins and they have absolutely no effect on its durability and structural integrity.

Technical assistance provided by The Hardwood Council, www.hardwoodcouncil.com, and The Hardwood Manufacturer's Association, 400 Penn Center Blvd., Suite 530, Pittsburgh, PA 15235.

About Our Product

II. CHARACTERISTICS OF NATURAL WOOD

The properties of natural wood are such that it reacts to the climactic or humidity changes found in its environment. As much as half of the weight of freshly sawn wood is water. Wellborn cabinetry is crafted from wood that is carefully kiln-dried, retaining just enough moisture for proper construction and finishing. As a product of nature, solid hardwoods continue to react to their surroundings even after manufacturing and installation. Solid wood acts similar to a common household sponge in that when placed in a warm, moist environment (high relative humidity), the wood begins to expand. When placed in a dry, colder environment (low relative humidity), the wood contracts. This phenomenon can be controlled (but never eliminated) by humidity regulation. The cabinets' quality and sturdiness are not affected by these natural changes.

As seasonal temperature and humidity changes occur within a house, door panels are susceptible to minor expansion and contraction. The contraction or shrinkage of door panels during low humidity periods may result in the appearance of an unfinished line down the length of the panel where it joins the door stile. Wellborn does not consider the appearance of a white line as a product defect and will not replace the doors on these grounds. Wellborn recommends the installation of a humidity control system to substantially reduce the possibility of expansion and contraction in all wood products in the home. If climactic conditions do not correct the situation automatically, obtain a Wellborn Touch-up Kit in the proper color and refer to the repair instructions in this manual.

Storing new cabinetry for about a week in the same room where it will be installed could help the wood reach a balance with its surroundings. Consider a humidifier in the winter and an air conditioner in the summer to stabilize your home's relative humidity at 40 to 45 percent.

Due to the natural variation and aging process, minor color match differences may be noticed when replacing doors on existing cabinetry or adding additional cabinetry at a later date. It is a characteristic of stained wood finishes, to age over time when exposed to smoke, sunlight or general household chemicals and detergents.



III. THE WELLGUARD FINISHING SYSTEM

Wellborn takes great pride and care with the finishing of our cabinetry. Years of research, partnered with development through Axalta, have resulted in our 24-step hand-sanded and hand-rubbed WellGuard finishing system that enhances — never hides — the natural beauty of our fine hardwoods. Depending on wood species and finish chosen, variations may be accented or subdued. Wellborn cabinet finishes are highly resistant to moisture, abrasion and many common household chemicals. Our finishing process consists of four coating applications designed to provide both decorative beauty and protection to the wood surface.

The detailed steps of our finishing process enhance the natural beauty of each wood species. Hand-rubbed stains are utilized to uniformly achieve the maximum grain coloration that results in a beautiful yet natural look.

Protecting the beautiful appearance of the stained products is equally as important as the decorative process. Through much research and development in the chemistry of wood finishing come finishes that, when properly applied and baked on, form an extraordinarily tough, crack resistant coating. This tough protective finish exhibits a high order of resistance to various acids, bases, solvents and stains, all of which are commonly found in every household kitchen.



IV. KCMA CERTIFICATION

To ensure that your cabinetry will bring you years of pleasure and performance, be sure to look for cabinets bearing the Kitchen Cabinet Manufacturers Association's (KCMA) seal of certification. Cabinets bearing this seal have passed 8 categories of tests for quality, from impact resistance and hinge durability to the ability to withstand such substances as household detergents, vinegar and oil.

In addition to meeting quality and strength requirements of the KCMA, Wellborn Cabinet, Inc. has an in-house laboratory that performs the same testing to ensure quality on a daily basis.

V. SDS INFORMATION

Under OSHA's Hazard Communications Standard 29 CFR 1910.1200, manufacturers of wood products, which may be processed in a manner that would create wood dust, are required to provide Safety Data Sheets and warning labels for their products. OSHA has concluded that warning labels and SDS are appropriate because of the health hazards that dust can cause.

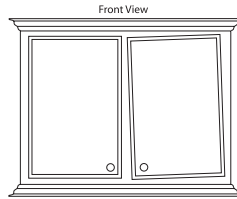
Since many of our products may be cut, sanded or otherwise processed in a manner that would create wood dust, we have provided the required SDS and warning labels to your Authorized Wellborn Dealer. Please contact the Authorized Wellborn Dealer from which you purchased your cabinets to obtain this information.

Adjustments

DOOR AND HINGE — FRAMED

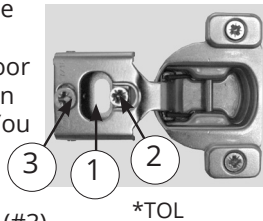
If your door is out of alignment, determine the hinge type on your cabinets based on the photographs below and use the following steps to make the necessary adjustments.

* Make all adjustments using hand powered screw driver.



A. HINGE ADJUSTMENT FOR ALL TWO DOOR TRADITIONAL OVERLAY CABINETS WITHOUT CENTER MULLION

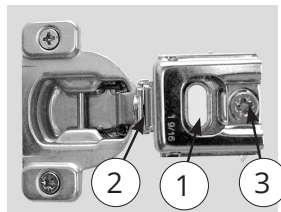
1. Height Adjustment: Loosen fixing screw (#1) on all hinges of one door. Move door to desired position. Retighten fixing screws on all hinges.
2. Side Adjustment: Loosen side adjustment screw (#2) on all hinges of one door. Move door to desired position. Retighten fixing screws on all hinges. You have up to 1.5mm (1/16") in each direction.
3. Depth Adjustment: The cam (#3) moves the door in and out for depth of each hinge, just turn to adjust.



*TOL

B. HINGE ADJUSTMENT FOR ALL FULL OVERLAY DOOR STYLES

1. Height Adjustment: Loosen fixing screw (#1) on all hinges of one door. Move door to desired position. Retighten fixing screws on all hinges.
2. Side Adjustment: Loosen fixing screws (#1). Turn side adjustment screw (#2) until door is in proper position. You have up to 1.5mm (1/16") in each direction. Retighten fixing screw.
3. Depth Adjustment: The cam (#3) moves the door in and out for depth of each hinge, just turn to adjust.



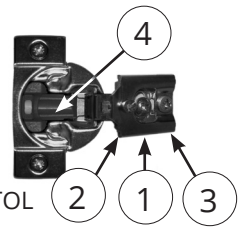
*FOL

Caution: Doors should not bind on adjacent doors or front of cabinet.

C. SMOOTH CLOSE HINGE ADJUSTMENT FOR ALL TWO DOOR TRADITIONAL OVERLAY CABINETS WITHOUT CENTER MULLION

1. Height Adjustment: Loosen fixing screw (#1) on all hinges of one door. Move door to desired position. Retighten fixing screws on all hinges.
2. Side Adjustment: Loosen side adjustment screw (#2) on all hinges of one door. Move door to desired position. Retighten fixing screws on all hinges. You have up to 1.5mm (1/16") in each direction.

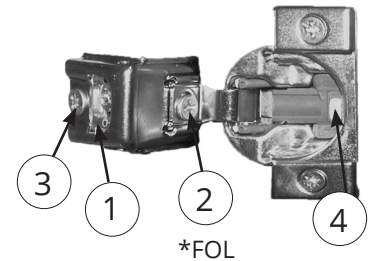
3. Depth Adjustment: The cam (#3) moves the door in and out for depth of each hinge, just turn to adjust.



4. Smooth Close Adjustment: On/Off switch on each hinge allows adjustment of door closure speeds.

D. SMOOTH CLOSE HINGE ADJUSTMENT FOR ALL FULL OVERLAY DOOR STYLES

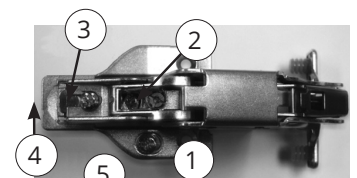
1. Height Adjustment: Loosen fixing screw (#1) on all hinges of one door. Move door to desired position. Retighten fixing screws on all hinges.
2. Side Adjustment: Loosen fixing screws (#1). Turn side adjustment screw (#2) until door is in proper position. You have up to 1.5mm (1/16") in each direction. Retighten fixing screw.
3. Depth Adjustment: The cam (#3) moves the door in and out for depth of each hinge, just turn to adjust.
4. Smooth Close Adjustment: On/Off switch on each hinge allows adjustment of door closure speeds. **Caution:** Doors should not bind on adjacent doors or front of cabinet



*FOL

E. CENTER HINGE ADJUSTMENT FOR CORNER SINK BASE AND EASY REACH CORNER CABINETS (TRADITIONAL OR FULL OVERLAY)

1. Height Adjustment: Loosen fixing screws (#1 or #5) on all hinges of one door. Move door to desired position. Retighten fixing screws on all hinges.
2. Side Adjustment: Turn side adjustment screw (#2) until door is in proper position. You have up to 1.5mm (1/16") in each direction.
3. Depth Adjustment: Loosen fixing screw (#3) and move door to desired position. Retighten fixing screw.
4. Door Removal: To remove hinge from mounting plates, press on clip (#4) and remove.
5. To attach door: Slide into track and press firmly to clip into plate.



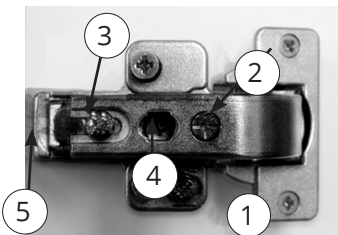
*TOL/FOL

Adjustments

DOOR AND HINGE — FRAMED

F. DOOR HINGE ADJUSTMENT FOR CORNER SINK BASE CABINETS (TRADITIONAL OR FULL OVERLAY)

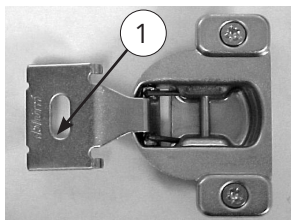
1. Height Adjustment: The cam screw (#1) moves the door up and down, just turn to adjust.
2. Side Adjustment: Turn side adjustment screw (#2) until door is in proper position.
3. Depth Adjustment: Loosen fixing screw (#3) and move door to desired position. Retighten fixing screw. The cam screw (#4) allows for additional depth adjustment if necessary.
4. Door Removal: To remove hinge from mounting plate, pull up on locking clip (#5).
5. To attach the door: Slide the hinge into the mounting plate track and press firmly until a "click" is heard.



*TOL/FOL

G. TWO WAY ADJUSTABLE HINGE FOR TRADITIONAL OVERLAY DOOR STYLES OR FULL OVERLAY DIAGONAL CORNER CABINETS

Height Adjustment: Loosen fixing screw (#1) on all hinges of one door. Move door to desired position. Retighten fixing screws on all hinges.

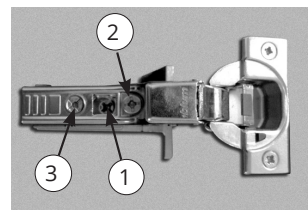


*TOL/FOL

HINGE ADJUSTMENTS INSET

H. HINGE ADJUSTMENT FOR CONCEALED HINGE INSET DOORS

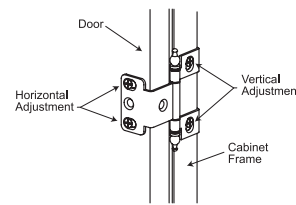
1. Height Adjustment: Rotate cam screw on mounting plate to adjust door position (+/- 2 mm). On non-cam mounting plates, loosen screws, adjust door and retighten screws.
2. Side adjustment: Rotate front screw to increase or decrease door overlay (+/- 2 mm).
3. Depth adjustment: Rotate rear spiral tech cam screw to adjust door gap (+3 mm, -2 mm).



*INS

I. HINGE ADJUSTMENT FOR BARREL HINGE INSET DOOR

1. Horizontal Adjustment: Loosen all hinge attachment screws on the back of the door. Adjust the door to the desired position. Tighten the hinge attachment screws and check fit. Repeat if necessary.
2. Vertical Adjustment: Loosen all hinge attachment screws on the inside of the cabinet frame. Adjust the door to the desired position. Tighten the hinge attachment screws and check fit. Repeat if necessary.



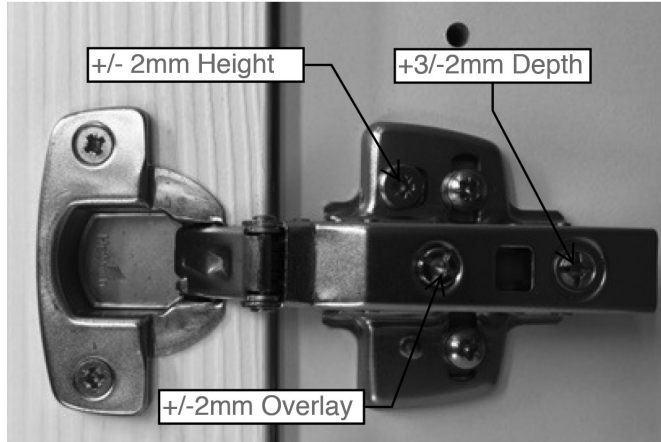
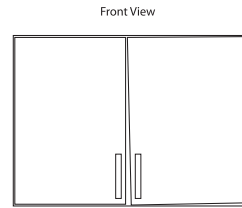
*INS

Adjustments

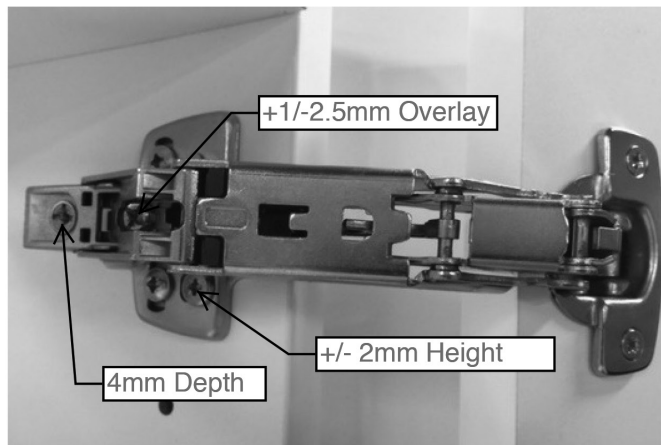
DOOR AND HINGE — FRAMELESS

If your door is out of alignment, determine the hinge type on your cabinets based on the photographs below and use the diagrams to make the necessary adjustments.

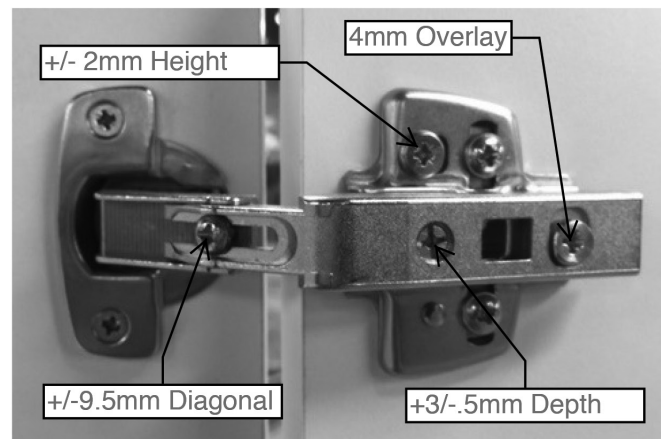
* Make all adjustments using hand powered screw driver.



Standard (shown), DC & BBC Adjustment



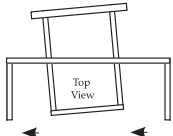
CSB Hinge



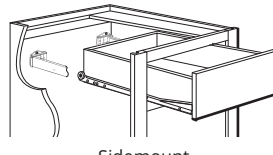
CSB Center Hinge

Adjustments

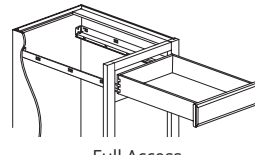
DRAWER



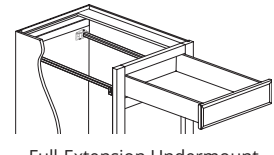
If your drawer is out of alignment, it can be easily corrected. Determine what type of drawer mounts you have on your cabinetry and follow the corresponding directions.



Side-mount



Full Access



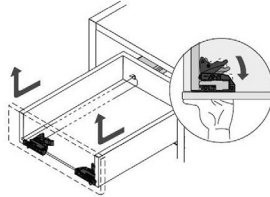
Full-Extension Undermount

A. SIDEMOUNT DRAWER SLIDES

1. Side-to-Side Adjustments: The drawer slides can be adjusted at the back of the cabinet by moving the drawer slide side to side within the plug-in bracket.

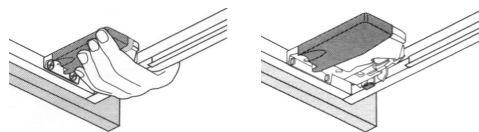
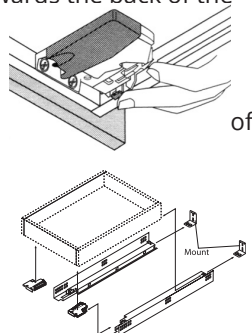
B. FULL ACCESS DRAWER SLIDES

1. Height Adjustments: The height of the drawer can be adjusted at the front using the rollers on the front fixing clips located underneath the drawer.
2. Side-to-Side Adjustments: The drawer slides can be adjusted at the back of the cabinet by moving the intermediate bracket piece side to side within the plug-in back plate.



C. FULL EXTENSION SOFT CLOSE UNDERMOUNT DRAWER

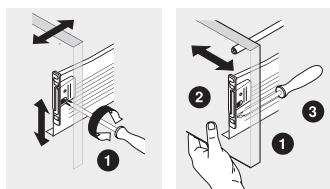
1. Height Adjustments (Upper Adjustment only): Press up on the latch. Push towards the back of the drawer.
2. Side-to-Side Adjustments: The drawer slides can be adjusted in the back the cabinet by moving the intermediate bracket piece side to side within the plug-in back plate.
3. Drawer Removal: Squeeze the orange handles on the locking devices. Pull the drawer straight out and up.
4. Drawer Installation: Place the drawer on the runners



and close. The locking devices will automatically engage the runners

D. METAL DRAWER BOXES

1. Height Adjustment: Adjust the height cam.
2. Side Adjustment: Loosen fixing screws. Adjust front. Tighten screws.



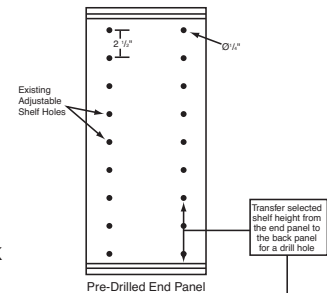
SHELVES

For cabinets without a center stile:

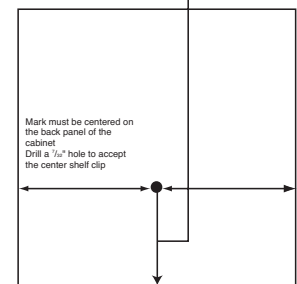
1. Using the pre-drilled holes in the end panels, select the locations for your shelves.
2. Insert the locking shelf clips in the pre-drilled holes in the end panels.
3. After placing the shelf in the clips, installation is complete.
4. Repeat steps 1-3 for each shelf location.

For cabinets 39" wide or wider with a center stile:

5. Using the pre-drilled holes in the end panels and center stile of the face frame, select the locations for your shelves.
6. Measure from the floor of the cabinet to the center of the selected hole.
7. Transfer this measurement to the back panel of the cabinet. Make a mark at this height along the center of the back panel.



Note: This mark is for a drill hole that will accept a shelf clip. It is important that the distance from the hole to the floor of the cabinet be the same as that of the location of the existing hole in the end panels and the back of the face frame (wall cabinets) which also has a set of pre-drilled holes.



8. Drill a hole with a 5mm or $\frac{3}{16}$ " drill bit at the specified mark to accept the rear plastic shelf clip. Insert the plastic clip so that it locks into this hole on the cabinet back.
9. Insert the locking shelf clips in the pre-drilled holes in the end panels. After placing the shelf in the clips, installation is complete.
10. Repeat steps 1-5 for each shelf location.

Note: The center shelf clip must be installed correctly for proper usage and safety. When installed properly, the adjustable shelves will support 65 lbs. of weight. We cannot accept responsibility for damages due to the failure to follow installation procedures.

Repair & Maintenance

CARE

Wellborn Cabinet, Inc. knows just how proud you are of your new cabinetry. With a little effort and a few precautions, you can keep your cabinetry looking as good as new for many years.

- Always** remove the doors and drawers of all cabinets adjacent to and above the oven during the cleaning cycle of self-cleaning appliances. The cleaning cycle generates heat that could affect the finish and surface of the cabinets. We recommend a Delamination Shield (Item Code: DS) be placed between freestanding oven and adjacent base cabinets.
- Always** clean up spills and any standing water, such as condensation from a glass or bowl, immediately. Pay special attention to the areas around your sink, range, dishwasher, toe spaces and baseboards. Use a blotting action rather than a wiping action.
- Always** apply cleaning products directly to the clean cloth you are using. Never apply directly to the surface of the area that you are cleaning.
- Always** lift objects—do not drag across the surface.
- Always** avoid extremes in room humidity. Too high or too low humidity can cause the wood to warp or the glue used in applying veneers to loosen.
- Always** avoid extreme changes in room temperature.
- Always** rotate accessories on furniture periodically so they do not sit in the same spot all the time.
- Always** use pads, cloth or felt to protect surfaces from plastics, rubber, hot dishes, beverages, bookends, flowerpots and vases.
- Always** use protective pads when writing with a ballpoint pen.
- Always** make minor repairs while they are still small.
- Always** treat your cabinetry as if it were furniture. The cabinets are constructed with the same grade wood as your furniture. They require the same care in order to reward you with long lasting beauty.
- Never** apply a damp cloth to your cabinetry.
- Never** apply excessive weight nor excessively pull down on doors as this may cause them to split at the hinge area and sag.
- Never** place more than 75 pounds of weight into any drawer as this may cause the bottom to sag or the drawer slides to work improperly. Also, the weight of what is stored in each drawer should be evenly distributed for the best durability.
- Never** use a drawer as a step as this may cause the bottom of the drawer to sag or the slides to warp.
- Never** use wax polishes on the surfaces of your cabinets as this may cause the finish to soften or a build-up of film that may pick up dirt, smoke or other pollutants in the air. This film may then start to smudge or streak.
- Never** use silicone polishes on the surface of your cabinets as this raises the sheen of your cabinetry beyond that intended by Wellborn. It can seep into the finish and is very difficult to remove.
- Never** use petroleum distilled polishes on the surface of your cabinetry as they are often flammable and toxic, and they are seldom ever completely removed.
- Never** use water on your cabinetry.
- Never** use ammonia on your cabinetry.
- Never** use an abrasive cleaner or an abrasive cloth on any painted surface as this will scratch, scar and dull the finish permanently.
- Never** use concentrated detergents on your cabinetry. Harsh detergents, strong soap and self-polishing waxes could have a damaging effect on the finished surface.
- Never** leave damp or wet cloths draped over cabinet doors. This moisture can cause permanent water damage to the area over time.
- Never** wipe your cabinetry with a used dishcloth since it could contain traces of grease or detergents.
- Never** place plastic or rubber objects on a wood finish—their ingredients react with those of the finish.
- Never** place furniture in direct sunlight. Prolonged exposure to direct sunlight may cause a change in color.
- Never** attempt to repair badly damaged surfaces without the proper materials or professional help. Consult your local Authorized Wellborn Dealer for badly damaged furniture.
- Never** let water run off sink to countertops and sink cabinetry.

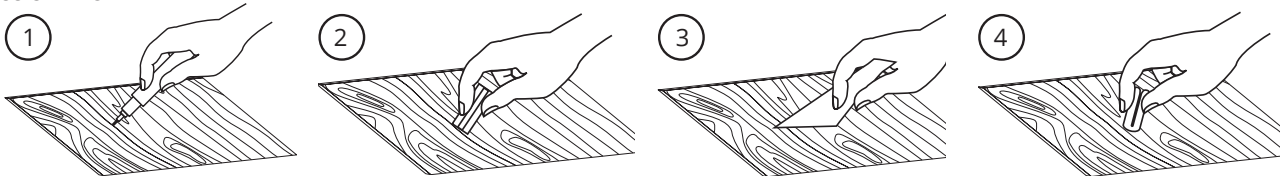
Repair & Maintenance

REPAIR

A. MINOR NICKS AND SCRATCHES AND NAIL HOLE REPAIR

Even with the best care and cleaning, minor nicks and scratches are bound to appear. It is always preferable to treat these problems while they are still minor. Wellborn has included sample putty sticks with this packet for minor repairs. A complete touch-up kit that includes a putty stick, touch-up marker and touch-up finish can be obtained through your Authorized Wellborn Dealer.

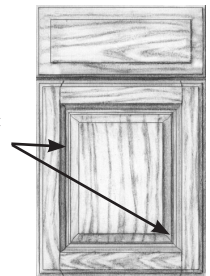
YOU SHOULD NOT ATTEMPT TO REPAIR BADLY DAMAGED CABINETRY YOURSELF. CONSULT YOUR LOCAL DEALER OR REFINISHER FOR ASSISTANCE.



1. Scratches can be repaired with the marker and wax sticks. Apply marker to scratch, then wipe off excess.
2. Next, rub the putty stick over the area to cover the void left behind.
3. Remove excess wax with the flat stick that comes in the kit.
4. Lightly use the buffing pad to restore original luster.

B. DOOR PANEL CONTRACTION REPAIR

As seasonal temperature and humidity changes occur within a house, door panels are susceptible to minor expansion and contraction. The contraction or shrinkage of door panels during low humidity periods may result in the appearance of an unfinished line down the length of the panel where it joins the door stile. Wellborn recommends the installation of a humidity control system to substantially reduce the possibility of expansion and contraction in all wood products in the home. If climactic conditions do not correct the situation automatically, obtain a Wellborn Touch-up Kit in the proper color and follow the repair instructions below. The color of the touch-up marker should correspond with the color of the door (i.e. light for light, medium for medium). However, due to the natural characteristic of wood to darken over time, it may be necessary to experiment a little.



READ THE INSTRUCTIONS THOROUGHLY BEFORE BEGINNING THE REPAIR.

1. Remove the door from the cabinet and place it on a flat surface.
2. Use a small piece of 220 grit sandpaper to remove any build-up or residue being careful to not remove any of the existing stain.
3. Shake marker thoroughly to mix contents. Depress felt tip against cardboard or newspaper to start material flow, watching felt tip until material reaches the point. Use care not to over saturate the point.
4. Start at one end and try to use one steady stroke to do the repair as it is difficult to get uniform color otherwise. It may be necessary to go over the area a second time to achieve the desired shade. If difficulty is experienced after two strokes, it may then be necessary to "flood" or saturate the tip of the marker into the troubled area. In this case, be sure to have a rag handy to remove excess material before it dries. Use minimal pressure on the rag to keep it from getting into the groove itself so as not to remove the paint from the actual repair area.
5. With certain doors or areas, it may be necessary to trim the tip of the touch-up marker to a finer point. This is easily done with a razor blade or a sharp knife. The tip can be removed and turned around, if desired, so as to keep the original shape on one end for touching up other areas.

Cabinet Care and Cleaning					
WELLBORN CABINET	Cleaning			Dusting	Polishing
	Mild Soap and Water (99% Water to Max 1% Solution)	Wood Deep Clean Aerosol (B8024)	99% Isopropyl Alcohol, or Citrus/ Vinegar-Based Cleaner (99% Water to Max 1% Solution)	Dusting Cloth (B8021)	Aerosol Clean & Polish (B8020)
Accessory Kits – Plastic/Wire	•			•	
Accessory Kits – Wood		•		•	
Aluminum Doors	•			•	
Glass Doors			•	•	
Glass Doors – Backpainted	•			•	
Hardware – Door/Drawer	•			•	
Laminate – High Gloss	•			•	
Laminate – High Gloss	•			•	
MDF*		•		•	•
Melamine – Embossed	•			•	
Melamine – Heavy Textured	•			•	
Wood – Painted*		•		•	•
Wood – Stained*		•		•	•

*Special Precautions for Wellborn's Midnight and Onyx Finishes: Finish should be cleaned with a damp cloth and no cleaning materials. Do not polish

Repair & Maintenance

CLEANING

To care for your cabinets:

***NEVER** use acidic or harsh chemicals, solvents, strong detergents, alcohol, ammonia, etc. on your cabinets.

***NEVER** spray any type of cleaner directly on materials that are to be cleaned.

***NEVER** use steel wool, metallic sponges, or abrasive cleaning pads.

Cleaning supplies pictured to the right may be purchased through your Authorized Wellborn Dealer or online at www.wellborn.com/order-cleaning-supplies.



MATTE LAMINATE AND HIGH GLOSS LAMINATE SURFACES

- Step 1. Dust frequently using our supplier approved dusting cloths (B8021).
- Step 2. For cleaning, use a damp microfiber cloth or sponge (B8022PK3) add a mild soap or detergent (99% water to 1% soap mix).
- Step 3. Dry your cabinets immediately after cleaning to avoid any damage to your finish.
 - The protective film of the panels must be removed once installation is complete or a maximum of 6 months after delivery, in order to ensure no adhesive residue remains on the surface. We recommend waiting 24 hours after peeling off protective film before cleaning.

LAMINATE, EMBOSSED MELAMINE AND HEAVY TEXTURED MELAMINE SURFACES

- Step 1. Dust frequently using our supplier approved dusting cloths (B8021).
- Step 2. For cleaning, use a damp microfiber cloth or sponge (B8022PK3) add a mild soap or detergent (99% water to 1% soap mix).
- Step 3. Dry your cabinets immediately after cleaning to avoid any damage to your finish.

STAINED WOOD, PAINTED WOOD AND MDF SURFACES

- Step 1. Dust frequently using our supplier approved dusting cloths (B8021).
- Step 2. For cleaning, it is recommended to use a microfiber cloth (B8022PK3) with our Wood Deep Clean Aerosol (B8024).
- Step 3. Wellborn suggests polishing your cabinets approximately once per month with our recommended Aerosol Clean & Polish (B8020).
 - Never apply water to your stained, or painted cabinets.
 - Special precautions for Wellborn's Midnight and Onyx finishes:
 - Finish should be cleaned with a damp cloth and no cleaning materials. The flat sheen will dull quickly.
 - Do not use any polish materials on these finishes.

TOUCH UP

Touch up markers can be used for any light touch ups (See your authorized Wellborn Dealer to purchase touch up markers).

ACCESSORY KITS

Wood: Wood accessory kits should be treated and cleaned following the Stained Wood guidelines above.

Plastic: Plastic and wire kits can be cleaned with mild soap and water (99% water to 1% soap mix).
Dry after cleaning.

GLASS DOORS

- Step 1. Dust frequently using our supplier approved dusting cloths (B8021).
- Step 2. Use 99% isopropyl alcohol, citrus or vinegar-based cleaners on a clean, non-abrasive cloth (B8022PK3) or paper towel to clean.
- Step 3. Dry your cabinets immediately after cleaning to avoid any damage to your finish.
 - If heavy stain is present and does not come clean using the suggestions above, use isopropyl alcohol with Magic Eraser by gently scrubbing until the mark is removed.

BACKPAINTED GLASS DOORS

- Follow instructions for Glass Doors for the gloss and/or satin surface of the glass (the non-painted side).
- For the painted side of your door, we recommend using a mildly damp (water only) non-abrasive cloth (B8022PK3) to gently clean the glass.

ALUMINUM DOORS

- Step 1. Dust frequently using our supplier approved dusting cloths (B8021).
- Step 2. For cleaning, use a damp microfiber cloth or sponge (B8022PK3) add a mild soap or detergent (99% water to 1% soap mix).
- Step 3. Dry your cabinets immediately after cleaning to avoid any damage to your finish.

DOOR HARDWARE AND DRAWER HARDWARE

- Door hardware and drawer hardware should only be cleaned with mild soap and water (99% water to 1% soap mix.)
- Dry immediately after cleaning to avoid any damage

WELLBORN CABINET®

These warranties cover Wellborn Cabinet, Inc. brands within those brands including Wellborn Cabinet, Premier Series, Estate Series, Elegant Bath, Select Series and Aspire Cabinetry.

This warranty became effective January 1, 2021, and covers cabinets ordered on or after January 1, 2021. Cabinets ordered before January 1, 2021, are covered by the warranty in effect at the time of purchase. This warranty gives you specific legal rights. You may also have other rights, which vary from state to state.



Lifetime Limited Warranty — Select, Premier, Estate and Aspire Cabinetry

Wellborn Cabinet, Inc. provides a Lifetime Limited Warranty on brands and series within those brands including Wellborn Cabinet, Premier Series, Estate Series, Elegant Bath, Select Series and Aspire Cabinetry to the original consumer purchaser for the lifetime of the product from the Wellborn Dealer's original date of purchase. The lifetime of cabinets is expected to be 10 years. Based on all other warranty terms and conditions being met, warranty claims will be prorated based on the expected lifetime of the product.

Exclusive Lifetime Limited Warranty Drawer Box, Door Hinge & Drawer Suspension System

Wellborn Cabinet, Inc. warrants our solid wood dovetailed, superior metal and deluxe metal drawer boxes to the original consumer purchaser for the lifetime of the product. Wellborn Cabinet, Inc. also offers an Exclusive Lifetime Limited Warranty to the original consumer purchaser on our Drawer Suspension Systems and Door Hinges. This warranty is expressed by the supplier. Replacement hinges and drawer slides are subject to availability from our supplier. If a claim is filed after a product becomes obsolete, the manufacturer will replace the discontinued product with the product closest to being equivalent to the original. After Wellborn's warranty expires, it is the consumer's responsibility to contact the manufacturer for hinge or slide replacements.

General Warranty Details

These warranties constitute the exclusive remedy against Wellborn Cabinet, Inc. for all cabinetry parts which have been proven to Wellborn Cabinet, Inc.'s satisfaction to be defective in material and/or workmanship under normal residential usage. These warranties are only valid in the United States of America. All of the above named warranties are limited to the first and original buyer and are not transferable to subsequent owners.

Wellborn cabinets are certified by the Kitchen Cabinet Manufacturers Association. All warranties will be void if cabinets or cabinet parts are in any way mishandled, modified, damaged, improperly installed, improperly stored during or prior to installation, or storage situations where loading exceeds the Kitchen Cabinet Manufacturers Association testing and certification standards which are in compliance with American National Standards Institute #A161-2000. Furthermore, this warranty will not apply to cabinets or cabinet parts damaged by abuse, misuse, neglect, acts of God, exposure to moisture, water, extreme temperatures, the effects of normal wear and tear, or installed or utilized in other than normal residential applications. **Cabinets must be installed for 180 days in order to be considered for Warranty.** All accessories and cabinet accessories warranties will be associated with the series in which they are sold.

Claims:

- I. Claims must initially be made through the Wellborn Cabinet, Inc. Dealer.
- II. Proof of purchase is required to obtain benefits from the warranty
- III. If your Dealer is no longer in business, or no longer carries the Wellborn product line, contact Wellborn Cabinet, Inc. at the address below and we will direct you to another Wellborn Dealer.

Wellborn Cabinet, Inc.; Customer Service/Warranty Claims; P.O. Box 1210; Ashland, AL 36251

(SEE CLAIM DETAILS ON FOLLOWING PAGES)

All warranty work must go through the Wellborn Cabinet, Inc. Dealer. Wellborn Cabinet, Inc. is obligated to provide parts to the dealer. Upon inspection, Wellborn Cabinet, Inc., at their discretion, will either replace or repair the defective part. This warranty does not cover costs associated with shipping or transportation of replacements, removal or installation costs, loss of time, use or revenue or other incidental damages, regardless of whether the work was performed by a contractor, service company or consumer. Replacement parts and cabinets may not match your existing cabinetry due to changes in the finish and wood over time.

Proper care can extend the performance and beauty of your cabinetry. Our installation manual, B8758PK10, was written as a guide to the operation, maintenance and installation of our product. If you did not receive your complimentary copy of this booklet, please contact your nearest Wellborn Cabinet, Inc. Dealer. Furniture polishes and waxes should not be used on Wellborn cabinetry.

Wellborn Cabinet, Inc. provides a Lifetime Limited Warranty on the Select, Premier and Estate Series and Aspire Cabinetry to the original consumer purchaser for the lifetime of the product. The Select Series has a machine sanded finishing process and does not include the detailed hand sanding technique featured in the Premier, Estate and Aspire Cabinetry. The following door styles are shared between Select and Premier: Alto, Belmont, Bishop, Harmony, Hartford, Prairie and Trestle. These will have the Select Series quality sanding and finishing even when ordered in the Premier Series. Therefore, Wellborn Cabinet, Inc. does not recommend designs combining these series. Wellborn Cabinet, Inc. does not warrant finish matching between Home Concepts, the Select, Premier or Estate Series or Aspire Cabinetry due to differences in wood characteristics and finishing processes. This warranty does not cover any and all claims made relating to or arising from finish matching which may exist in cabinets within designs blending or mixing different series. We further warrant our solid wood dovetailed, superior metal and deluxe drawer boxes to the original consumer purchaser for the lifetime of the product. We also offer an Exclusive Lifetime Limited Warranty to the original consumer purchaser on our Drawer Suspension Systems and Door Hinges. This warranty is expressed by the supplier. Replacement hinges and drawer slides are subject to availability from our supplier. If a claim is filed after a product becomes obsolete, the manufacturer will replace the discontinued product with the product that is closest to being equivalent to the original. After Wellborn's warranty expires, it is the consumer's responsibility to contact the manufacturer for hinge or slide replacements. These warranties constitute the exclusive remedy against Wellborn Cabinet, Inc. for all cabinetry parts that have been proven to Wellborn Cabinet, Inc.'s satisfaction to be defective in material and/or workmanship under normal residential usage. These warranties are only valid in the United States of America. These warranties are limited to the first and original buyer, and are not transferable to subsequent owners. **The lifetime of cabinets is expected to be 10 years. Based on all other warranty terms and conditions being met, credit for replacement of product for warranty claims will be prorated based on the expected lifetime of the product.**

Inset Cabinetry

There are extreme differences in the design and the installation of inset cabinetry. Due to the cabinet door's inset design into the face frame, many design rules are different than in standard overlay cabinetry including pull dimensions, door opening tolerance for adjacent cabinets, interior accessories, and many more. Installing inset cabinets has extreme differences from standard overlay. For inset cabinetry in the Premier Series, tolerance around doors and drawers will vary. Prior to installation, cabinet should be placed on a level surface, door spacers removed and each door and drawer inspected for proper opening and closing. If there are any issues with operation of the cabinet parts, contact your customer service representative immediately prior to cabinet installation. The door and drawer front opening and closing operation will be voided from warranty if the cabinet has been installed.

Inset cabinets must be carefully installed with proper shimming to avoid racking the cabinet out of square, which causes binding and malfunction. Inset cabinets must **NOT** be racked in any way. Cabinet doors and drawers should **NOT** be removed from cabinet during installation.

Vanity Wall Mounts

Because of the design characteristics of the Wall Mounted Vanity, Wellborn recommends installation strictly in accordance with the instructions in the Wellborn Specification and Price Catalog and the Installation, Care and Warranty Guide and instructions in cabinet. Failure to strictly follow the installation illustration may result in an unintended separation of the Vanity from the wall and potentially cause injury or damage to property. Any such damage to the Vanity caused by an installation not strictly adhering to the illustration in the above referenced literature is not covered by our warranty.

Drawer Boxes

Wellborn Cabinet, Inc. will send the original consumer purchaser a furniture board, plywood, Wellborn dovetailed, superior metal and deluxe metal drawer boxes to replace any defective drawer box subject to this warranty. This warranty is for replacement only. Wellborn Cabinet, Inc. specifically does not cover drawers which have been exposed to abuse, misuse or excessive loads. To obtain replacement, remove the drawer from the cabinet and remove the drawer front and hardware from the drawer box. Mail the drawer box and \$15.00 (certified check or money order) for postage and handling to:

Wellborn Cabinet, Inc.; P.O. Box 1210; Ashland, AL 36251

How to File A Claim

Please enclose a letter explaining the defect with a copy of your proof of purchase. Give the full name and address of your dealer and original installer. Allow approximately 4-6 weeks for delivery.

All claims for defective products must be submitted in writing on the Wellborn Cabinet, Inc. Warranty Claims Form to the Wellborn Cabinet, Inc. Dealer detailing the specific problem no later than 90 days after the defect has been known. Proof of purchase (an original invoice or a dated sales receipt from a Wellborn Dealer) is required. Warranty claims must be initially made through your Wellborn Cabinet, Inc. Dealer. The Wellborn Cabinet, Inc. Dealer will present the warranty claim to Wellborn Cabinet, Inc. If you need further assistance, please contact:

Wellborn Cabinet, Inc.; Customer Service/Warranty Claims; P.O. Box 1210; Ashland, AL 36251

Upon inspection, Wellborn Cabinet, Inc., at their discretion, will either replace or repair the defective part. This warranty does not cover costs associated with shipping or transportation of replacements, removal or installation costs, loss of time, use or revenue or other incidental damages, regardless of whether the work was performed by a contractor, service company or consumer. Replacement items will be sent at a charge cost to the Dealer and submitted as a credit by a Wellborn Account Manager. This is a parts-only warranty, and excludes any charges for labor expense or product damage incurred by the installer in connection with the replacement of defective parts or portions thereof. Wellborn Cabinet, Inc. will not be responsible for any product damaged as a result of the purchaser's attempt to repair the product. Wellborn Cabinet, Inc. reserves the right to request products be returned to the factory for determination of warranty requirements before issuing credit. This warranty only covers products supplied by Wellborn Cabinet, Inc.

All woods feature natural characteristics such as grain patterns, texture, and color variations. We do not consider these defects in our product. Read the Product Awareness Statement for a detailed explanation of characteristics that are not considered to be defects of our product.

PRODUCT AWARENESS STATEMENT

The natural characteristics of wood with respect to its color, texture, finishes, grain pattern and wood movement will show distinctive features that may be perceived by some individuals to be product defects. However, these characteristics result from environmental factors beyond manufacturer's control (i.e., humidity changes) and are not considered defects on a Wellborn product and are excluded from Warranty. To gain further understanding of the characteristics of hardwoods, please review the section titled "Characteristics of Natural Wood" in our Installation, Care and Warranty Guide. The following are examples of these natural characteristics:

- All wood finishes will show a change in color of finish and wood over time, including laminate doors, which may occur when exposed to sunlight, smoke, UV rays, indoor lighting, household or cleaning chemicals, or other environmental conditions. White will develop yellow tones. Some panels, such as veneer, may change at a faster rate than solid wood. Cherry wood ages noticeably faster than other wood species.
- All doors will show separation and peeling in the joints at the door corners. These characteristics are more prevalent in miter door styles than other doors. This is directly related to relative humidity and how it reacts to wood. We recommend humidity control in your home.
- Separation at the face frame or door joint lines can be visible in all stained and painted finishes. These characteristics are more prevalent in darker finishes and painted products.
- Solid wood doors manufactured of quality kiln-dried hardwood are affected by temperature and humidity and will expand or contract depending on the location installed. These conditions are inherent in all wood products and will cause a light line to appear at edges of the center panel normally when winter heating greatly reduces humidity. This can easily be touched up (use a Wellborn Touch up Kit) and is not considered a defect. Excessive humidity will cause expansion of the center panel which will result in shifting of rails and stiles of the door. This can be controlled by regulating humidity.
- End panels, due to being made of different materials, will not match the door of the cabinet. This is not considered a defect and is not covered under warranty.
- Painted Medium Density Fiberboard (MDF) doors display a color variance from the painted maple face frames and mouldings used in the same finish due to the MDF substrate material. This is not considered a defect and is not covered under warranty.
- Painted Medium Density Fiberboard (MDF) five-piece doors and drawer fronts will show joint lines.
- Any product that is exposed to moisture will show separation at the joints. This natural characteristic is excluded from warranty.
- Undue wetness and heat to the edges of laminate doors will cause delamination over time.
- Doors that are warped must be allowed to hang through one heating cycle, or 180 days, before a no-charge replacement will be considered.
- Some doors may warp slightly after being installed in a new home due to high humidity levels and in older homes due to low humidity levels. The door will usually return to its normal flat position after going through the heating cycle; however, cabinets need to be checked for proper installation and squareness. Cabinets improperly installed can be racked out of square. If cabinets are not properly installed, shimmed, or the floor is unlevel, the cabinet face frame may rack to the contour of the wall resulting in doors that appear off on a flat plane. The door will probably still be flat and not warped or racked. These problems can be greatly reduced with correct installation and humidity control.
- Variations in natural grains and finishes (especially noticeable in natural and light stain colors) are not considered defects.
- Scratches and changes in finish sheen resulting from bumps or abrasions during delivery, installation, and daily usage are not considered defects.

Even though great care and quality control standards exist in the manufacturing of these products, the above characteristics could possibly develop in your cabinetry. We recommend humidity control in your home for all products to reduce the possibility of wood movement and shrinkage.

CAUTION: During the cleaning cycle of self-cleaning appliances, we recommend that you remove the doors and drawers of all cabinets adjacent to and above the oven. The cleaning cycle generates heat that could affect the finish and surface of the cabinets. We recommend a Delamination Shield (Item Code: DS) be placed between freestanding base ovens and adjacent base cabinet during cabinet installation. Wellborn Cabinet, Inc. is not responsible for any product defect that results from not following these procedures.

General Product Information

Wood based materials must be protected against both high and low humidity extremes as well as direct moisture since the wood used in them retains its hygroscopic properties despite the fact that it has been processed.

Wellborn Cabinet, Inc. reserves the right to continuous product refinement. Specification changes in design and materials may be introduced, as conditions require, without obligation to make changes to products previously manufactured. If a claim is filed after a product becomes obsolete, Wellborn Cabinet, Inc. reserves the right to honor the warranty by replacing the discontinued product with the current product that is closest to being equivalent to the original product. This replacement product may not perfectly match the original. On all product enhancements, the old style will no longer be available as of the effective date of the change. Discontinued door styles and finishes will be available for replacement for 6 months from discontinue date; however, lead times will vary. Production will be run once per quarter. The warranty on any replacement product will extend for the balance of the original warranty.

Any wall cabinets greater than 36" wide are not recommended as stand alone cabinets without additional reinforcements above and beyond Wellborn's installation manual guidelines. We also recommend that any stand alone cabinet, regardless of width, be reinforced with angle brackets to help support the weight of accessories that is added to cabinet interior. Wellborn Cabinet Inc. meets or exceeds KCMA weight requirements. Wellborn Cabinet, Inc. will not warranty any cabinets that fall as a result of standing alone. It is the dealer's responsibility to design cabinetry that are not single displays on a wall. Dealer will be obligated to pay the cost of damages if dealer designs with single cabinets.

Door styles that have wide shaker stiles have a greater tendency to warp.

Character Wood Characteristics

Character maple and character cherry have very different characteristics than standard hard maple, cherry and other woods, giving them an overall distinctive rustic appearance. Because these wood types are unique, it is important to understand the qualities of character maple and character cherry.

Character Cherry

Character cherry has very different characteristics than standard cherry and other woods, giving it a distinctive rustic appearance. Its characteristics are brought out by randomly occurring, variously sized knots, worm holes and tracks, gum pockets and streaks, mineral stains and streaks, burls, blemishes, sapwood, and non-structural splits. The amount of character marks will vary from each piece of wood, making each cabinet unique. Character cherry will include wood color differences that can range from pink to dark brown with a flowing grain pattern. While knots in character cherry are less common than in character maple, it is possible to find open and closed knots with some knots possibly located in the center panel of door and drawer panels. Cluster knots could also be a feature.

Character Maple

Character maple has very different characteristics than standard hard maple and other woods, giving it a distinctive rustic appearance. Its characteristics are brought out by randomly occurring, variously sized knots, pin holes, worm holes and tracks, gum and bark pockets, sugar tracks, heartwood and mineral streaks. The amount of character marks will vary from each piece of wood, making each cabinet unique. Character maple will include wood color differences caused by variations found in minerals in the soil. It will be common to find open knots and bark pockets. Some knots may have small holes through the center panel. Character features include knots that may be located in the center panel of the door and drawer panels.

Knots in Character Cherry and Character Maple

Open knots located in the center panel of the door and drawer panels are acceptable, though they must be structurally sound. An entire knot can be as large as 2½" in diameter. Visible openings in knots clear through must not exceed ½". Cluster knots could also be a feature. Some knot locations may affect hardware placement.

Other parts of the cabinet like door stiles, rails, and mouldings will not include knots but may show Character Cherry's and Character Maple's other natural features. Door styles with wide shaker stiles and rails are the only exception to this and will have some knots located in the stiles and rails of the door.

Appearance of Character

Door parts are chosen at random; therefore, the appearance of each individual door widely varies from a great amount of character to relatively clear Maple/Cherry. It will be uncommon to find all characteristic marks on any single piece of cabinetry. The natural characteristics of Character Maple and Character Cherry, including variations in grain patterns and color, are not considered reasons for product replacement and are not covered under the Warranty Program. We recommend viewing a door sample prior to ordering. For Character Maple and Character Cherry end panels, use Matching Wall and Base End Panels.

Dark stains will hide the majority of character features. Large open knots and some splits, if present, may still be partially visible. Character features are more noticeable on Natural or lighter toned finishes. Dark stain on cherry will accentuate the character in the wood.

Finishes

Paints

Many Wellborn Cabinet, Inc. products have paint applied to the face frames, doors, drawer fronts, and end panels. All laminate cabinets have painted face frames. Color will vary on laminate doors. Painted face frames and other painted products will eventually have visible cracking around the joint areas. These variations are considered the natural characteristics of the material in relation to their environment and are not covered under these warranties. Painted Medium Density Fiberboard (MDF) doors display a color variance from the painted maple face frames used in the same finish due to the MDF substrate material. This is not considered a defect and is not covered under warranty. Painted MDF five-piece doors and drawer fronts will show joint lines. This is not considered a defect and is not covered under warranty.

Glazing

Many of Wellborn's finishes receive a glazing finish process. Wellborn applies a glaze by spraying glaze over the entire product fronts. A hand wiping process is then performed, leaving glaze in the grooves and changing the color tone on the smooth surface. This process purposely creates an uneven, inconsistent look of light to dark tones in the corners, deep grooves, and wood grains. This is not considered a product defect and has no warranty.

On Oak

Oak is an open grain wood and, therefore, the glaze techniques will hang up in all open grain areas of the door, which will appear as "ticking" and "bleed out". Oak can have the visual of "flecking" which is part of the natural characteristics of this species. Many finishes do not receive the stain well in the flecking areas. These features are acceptable with specialty finishes on oak and are not considered defects. Therefore, these features are not covered under these warranties.

On Hickory

Hickory can have the visual of "flecking" which is part of the natural characteristics of this species. Many finishes do not receive the stain well in the flecking areas. This feature is acceptable with specialty finishes on hickory and is not considered a defect. Therefore, this feature is not covered under these warranties.

On Soft Edges

Certain finishes on soft-edged door styles may show a slight line between the door panel and wood edge. This is not considered a product defect and has no warranty.

On Bead Board

Door styles with bead board grooves retain more stain in all finishes, resulting in a darker color in the grooves. This is not considered a product defect and has no warranty.

Self-Applied Finishes

Wellborn Cabinet, Inc. makes no warranty on self-applied finishes. Any self-applied finishes to any Wellborn Cabinet, Inc. products are not covered under warranty.

Techniques

Wellborn uses certain techniques to achieve design features of cabinetry. The results of these techniques are intentional and are not considered to be defects on a Wellborn product. Wellborn Cabinet, Inc. makes no warranty on the design features created by these techniques. The following are examples of these techniques.

Burnishing

A technique where the profile edges have been brushed with a dark glaze to create an antiqued effect.

Carved Edges

A technique where small areas of the wood surface are chiseled out on door edges and corners to create a high level of worn look.

Dry Brush Glaze

A technique applying a very dark stain to imitate distressing on the surface of the wood.

Medium Dents

A physical technique of randomly striking the wood surface with a tool to create indentations that mimic the look of aged wood. Medium Dents are larger than Worm Holes and will collect a glaze in varying amounts that range from being highly visible to unnoticeable from the finish when applied.

Rasping

A physical technique using a metal rasp to run over the edges and raised details to mimic severe wear.

Rub Thru

A sanding technique used to randomly expose an undercoat of natural wood tone on corners and edges.

Small Dents

A physical technique of randomly striking the wood surface with a tool to create indentations that mimic the look of aged wood. Small Dents are larger than Worm Holes and will collect a glaze in varying amounts that range from being highly visible to unnoticeable from the finish when applied.

Worm Holes

A physical technique of randomly placing small round holes that mimic the look of insect penetration which occurs naturally in trees and harvested wood. Worm Holes are smaller than Small Dents and will collect a glaze in varying amounts that range from being highly visible to unnoticeable from the finish when applied.

Finish Techniques

Finish Techniques will not match at cuts or corners created during installation. This variance is what creates the individual uniqueness of each cabinet and is not considered a reason for product replacement. For detailed information regarding the availability of finish techniques, see the specification catalog.

Antique

The Antique Technique is created by using various techniques which include burnishing, rub through, small dents, and worm holes. Each piece will vary in the amount of sanding and techniques applied. Due to the random placement of these techniques, every door will be unique and no two doors will be identical; therefore, the effects will vary within individual doors and throughout the entire room. These features are acceptable for the Antique Technique and are not considered defects. Therefore, these features are not covered under warranty.

Heirloom

The Heirloom Technique is created by using various techniques which include burnishing, small dents, and worm holes. Each piece will vary in the amount of distressing and techniques applied. Due to the random placement of these techniques, every door will be unique and no two doors will be identical; therefore, the effects will vary within individual doors and throughout the entire room. These features are acceptable for the Heirloom Technique and are not considered defects. Therefore, these features are not covered under warranty.

Olde World

The Olde World Technique is created by using various techniques which include burnishing, carved edges, dry brush glaze, rasping, rub through, small to medium dents, and worm holes. Each piece will vary in the amount of sanding and techniques applied. Due to the random placement of these techniques, every door will be unique and no two doors will be identical; therefore, the effects will vary within individual doors and throughout the entire room. These features are acceptable for the Olde World Technique and are not considered defects. Therefore, these features are not covered under warranty.

Vintage

The Vintage Technique is created by using the rub through technique. Each piece will vary in the amount of sanding. Due to the random placement of this technique, every door will be unique and no two doors will be identical; therefore, the effects will vary within individual doors and throughout the entire room. These features are acceptable for the Vintage Technique and are not considered defects. Therefore, these features are not covered under warranty.

ColorInspire

ColorInspire is a program that allows customers to choose that just right color from thousands of choices in any of the Benjamin Moore, Sherwin Williams or Valspar color decks. ColorInspire utilizes a catalyzed conversion finish that is oven-cured, creating a tough, baked-on long lasting finish. The sheen level will be the standard low sheen level used on the current paint program. Depending on the door material chosen, some of the wood grain may show through the paint. The appearance of color is affected by natural wood variation, graining, lighting, profiles, and edge shapes. Therefore, ColorInspire samples approximate the actual paint color and will not be an exact match to the paint manufacturer's paper color deck. There will also be a slight difference between the ColorInspire sample and the cabinet order.

Unfinished Products

The Unfinished option is available for most wood door styles in the Select, Premier and Estate Series. Cabinet doors, drawer fronts and face frames will be unfinished. All open cabinets, like bookcases, will have an unfinished interior. This product is sanded at the factory; however, it should be sanded prior to field applying a finish to remove any residue that may be on the surface. Unfinished cabinets lack the protection of a finish coat and are more susceptible to damage from variations in temperature and humidity and, therefore, are not covered under warranty. The Unfinished option on any cabinet voids the warranty on doors and finish. Wellborn Cabinet, Inc. does not warranty any unfinished wood hoods once they are altered.

Decorative Laminate Veneer Material

The beauty and durability of Decorative Laminate Veneer Materials (DLV) define and enhance the beauty of your cabinetry. Utilizing thermally fused melamine panels and a protective polyester resin coating, Aspire Cabinetry DLV components result in a strong material. DLV products are engineered to reduce expansion and contraction. Exposure to excessive amounts of water and certain household chemicals will affect the durability and color of the finish.

General Information

It is the nature of solid wood to vary somewhat in color and grain characteristics. Sample products may not precisely reflect the natural grain and color found in Wellborn cabinets. Exposure to sunlight, smoke, household chemicals and other environmental conditions will affect the color of the finish through time. Every wood species exhibits additional characteristics with age such as darkening of grain, pinholes and sap runs. Because of these influences, finish samples should not be used to represent the product beyond 6 months for cherry and 12 months of all other materials from date of manufacture. It is the Wellborn Dealer's responsibility to keep samples and showrooms current and to make sure their showroom is reflective of Wellborn finishes and door styles. It is the Wellborn Dealer's responsibility to check that samples are marked correctly for accuracy of color and door profile before releasing for presentation.

This is the exclusive warranty of Wellborn Cabinet, Inc. and is in lieu of all other warranties. Except as set forth herein, Wellborn Cabinet, Inc. makes no other warranties, expressed or implied, including any implied warranty of merchantability or fitness for a particular purpose, with respect to the product. Furthermore, incidental or consequential damages resulting from the failure of this product are expressly excluded as remedies. Wellborn neither assumes nor authorizes any other person to assume for it any other liabilities in connection with the sale of its products except in the case of expressed warranties which may be issued in writing from time to time with respect to particular products. Except where a different expressed written warranty has been issued with respect to particular products, no warranty, expressed or implied, is intended to be provided by Wellborn to any person or persons other than the original consumer purchaser. Some states do not allow limitations on how long an implied warranty lasts or limitations or exclusions of incidental or consequential damages. Therefore, the above limitations and exclusions may not apply to you.

This warranty does not include The Home Concepts brand by Wellborn Cabinet, Inc. The Home Concepts brand by Wellborn Cabinet, Inc. possesses its own warranty.

Penalty Clause Contracts: Wellborn Cabinet, Inc. will assume no liability whatsoever in any penalty clause contracts even if it appears that we are at fault in triggering such a penalty. All liability will be borne by the Dealer who chooses to be committed.

Wellborn Dealers are responsible for reviewing all warranties and disclaimers with their consumer purchasers. Wellborn Dealer responsibilities include management of warranty claims from the consumer purchaser. Wellborn Cabinet, Inc. advises the Wellborn Dealer to require the consumer purchaser to sign the Statement of Understanding below but has no liability should the Dealer fail to do so.

Wellborn Customer/Dealer—Any individual or business that buys Wellborn products directly from Wellborn Cabinet, Inc.

Consumer Purchaser—One who purchases Wellborn products from a Wellborn Customer/Dealer.

STATEMENT OF UNDERSTANDING

Being the consumer purchaser of the cabinetry discussed by the warranty on pages 24-30, I understand the Product Awareness Statements and Disclaimers as called out in this document.

CONSUMER PURCHASER SIGNATURE

DATE

WELLBORN CABINET, INC. DEALER SIGNATURE

DATE



Home Concepts™

By **WELLBORN**
CABINET

One-Year Limited Warranty

The Home Concepts brand by Wellborn Cabinet, Inc. provides a One-Year Limited Warranty to the original consumer purchaser for one year from Dealer's original date of purchase on Home Concepts cabinetry parts.

This warranty became effective January 1, 2021, and covers cabinets ordered on or after January 1, 2021. Cabinets ordered before January 1, 2021, are covered by the warranty in effect at time of purchase. This warranty gives you specific legal rights. You may also have other rights, which vary from state to state.

Exclusive Lifetime Limited Warranty Door Hinge & Drawer Suspension System

The Home Concepts brand by Wellborn Cabinet, Inc. also offers an Exclusive Lifetime Limited Warranty to the original consumer purchaser on our Drawer Suspension Systems and Door Hinges. This warranty is expressed by the supplier. Replacement hinges and drawer slides are subject to availability from our supplier. If a claim is filed after a product becomes obsolete, the manufacturer will replace the discontinued product with the product that is closest to being equivalent to the original. After Wellborn Cabinet, Inc.'s warranty expires, it is the consumer purchaser's responsibility to contact the manufacturer for hinge and slide replacement.

General Warranty Details

These warranties constitute the exclusive remedy against Wellborn Cabinet, Inc. for all cabinetry parts which have been proven to Wellborn Cabinet, Inc.'s satisfaction to be defective in material and/or workmanship under normal residential usage. These warranties are only valid in the United States of America. All of the above named warranties are limited to the first and original buyer, and are not transferable to subsequent owners.

Home Concepts Cabinets are certified by the Kitchen Cabinet Manufacturers Association. All warranties will be void if cabinets or cabinet parts are in any way mishandled, modified, damaged, improperly installed, improperly stored during or prior to installation, or storage situations where loading exceeds the Kitchen Cabinet Manufacturers Association testing and certification standards which are in compliance with American National Standards Institute #A161-2000. Furthermore, this warranty will not apply to cabinets or cabinet parts damaged by abuse, misuse, neglect, acts of God, exposure to moisture, water or extreme temperatures, the effects of normal wear and tear, or installed or utilized in other than normal residential applications. **Cabinets must be installed for 180 days in order to be considered for Warranty.**

Claims:

- I. Claims must initially be made through the Home Concepts Dealer.
- II. Proof of purchase is required to obtain benefits from the warranty.
- III. If your Home Concepts Dealer is no longer in business, or no longer carries the Home Concepts product line, contact Wellborn Cabinet, Inc. at the address below and we will direct you to another Home Concepts Dealer.

Wellborn Cabinet, Inc.; Customer Service/Warranty Claims; P.O. Box 1210; Ashland, AL 36251

(SEE CLAIM DETAILS ON FOLLOWING PAGES)

All warranty work must go through the Home Concepts Dealer. Wellborn Cabinet, Inc. is obligated to provide parts to the dealer. Upon inspection, Wellborn Cabinet, Inc. at their discretion, will either replace or repair the defective part. This warranty does not cover costs associated with shipping or transportation of replacements, removal or installation costs, loss of time, use or revenue or other incidental damages, regardless of whether the work was performed by a contractor, service company or consumer. Replacement parts and cabinets may not match your existing cabinetry due to changes in the finish and wood over time.

Proper care can extend the performance and beauty of your cabinetry. Our installation manual, B8758PK10, was written as a guide to the operation, maintenance and installation of our product. If you did not receive your complimentary copy of this booklet, please contact your nearest Home Concepts Dealer. Furniture polishes and waxes should not be used on Home Concepts cabinetry.

Wellborn Cabinet, Inc. provides a One Year Limited Warranty to the original consumer purchaser for one year from the Home Concepts Dealer's original date of purchase on our cabinetry parts. Home Concepts and the Select Series have a machine sanded finishing process and do not include the detailed hand sanding technique featured in the Premier and Estate Series and Aspire Cabinetry. The following door styles are shared between Select and Premier: Alto, Belmont, Bishop, Harmony, Hartford, Prairie and Trestle. These will have the Select Series quality sanding and finishing even when ordered in the Premier Series. Therefore, Wellborn Cabinet, Inc. does not recommend designs combining these series. Wellborn Cabinet, Inc. does not warrant finish matching between the Home Concepts, Select, Premier and Estate Series or Aspire Cabinetry due to differences in wood characteristics and finishing processes. This warranty does not cover any and all claims made relating to or arising from finish matching which may exist in cabinets within designs blending or mixing different series. We also offer an Exclusive Lifetime Limited Warranty to the original consumer purchaser on our Drawer Suspension Systems and Door Hinges. This warranty is expressed by the supplier. Replacement hinges and drawer slides are subject to availability from our supplier. If a claim is filed after a product becomes obsolete, the manufacturer will replace the discontinued product with the product that is closest to being equivalent to the original. After Wellborn's warranty expires, it is the consumer purchaser's responsibility to contact the manufacturer for hinge and slide replacements. These warranties are the exclusive remedy against Wellborn Cabinet, Inc. for all cabinetry parts which have been proven

to Wellborn Cabinet, Inc.'s satisfaction to be defective in material and/or workmanship under normal residential usage. These warranties are only valid in the United States of America. These warranties are limited to the first and original buyer, and are not transferable to subsequent owners.

How To File A Claim

All claims for defective products must be submitted in writing to the Home Concepts Dealer detailing the specific problem no later than 90 days after the defect has been known. Proof of purchase (an original invoice or a dated sales receipt from a Home Concepts Dealer) is required. Warranty Claims must be initially made through your Home Concepts Dealer. The Home Concepts Dealer will present the warranty claim to Wellborn Cabinet, Inc. If you need further assistance, please contact:

Wellborn Cabinet, Inc.; Customer Service/Warranty Claims; P.O. Box 1210; Ashland, AL 36251

Upon inspection, Wellborn Cabinet, Inc., at their discretion, will either replace or repair the defective part. This warranty does not cover costs associated with shipping or transportation of replacements, removal or installation costs, loss of time, use or revenue or other incidental damages, regardless of whether the work was performed by a contractor, service company or consumer. Replacement items will be sent at a charge cost to the Dealer and submitted as a credit by a Home Concepts Account Manager. This is a parts-only warranty, and excludes any charges for labor expense or product damage incurred by the installer in connection with the replacement of defective parts or portions thereof. Wellborn Cabinet, Inc. will not be responsible for any product damaged as a result of the purchaser's attempt to repair the product. Wellborn Cabinet, Inc. reserves the right to request products be returned to the factory for determination of warranty requirements before issuing credit. This warranty only covers products supplied by Wellborn Cabinet, Inc.

All woods feature natural characteristics such as grain patterns, texture, and color variations. We do not consider these defects in our product. Read the Product Awareness Statement for a detailed explanation of characteristics that are not considered to be defects of our product.

PRODUCT AWARENESS STATEMENT

The natural characteristics of wood with respect to its color, texture, finishes, grain pattern and wood movement will show distinctive features that may be perceived by some individuals to be product defects. However, these characteristics result from environmental factors beyond manufacturer's control (i.e., humidity changes) and are not considered defects on a Home Concepts product and are excluded from Warranty. To gain further understanding of the characteristics of hardwood, please refer to the section titled "Characteristics of Natural Wood" in our Installation, Care and Warranty Guide. The following are examples of these natural characteristics:

- All wood finishes will show a change in color of finish and wood over time, including laminate doors, which may occur when exposed to sunlight, smoke, UV rays, indoor lighting, household or cleaning chemicals, or other environmental conditions. White will develop yellow tones. Some panels, such as veneer, may change at a faster rate than solid wood.
- All doors will show separation and peeling in the joints at the door corners. This is directly related to relative humidity and how it reacts to wood. We recommend humidity control in your home.
- Separation at the face frame or door joint lines can be visible in all painted and stained finishes. These characteristics are more prevalent in darker finishes and painted products.
- Solid wood doors manufactured of quality kiln-dried hardwood are affected by temperature and humidity and will expand or contract depending on the location installed. These conditions are inherent in all wood products and will cause a light line to appear at edges of the center panel normally when winter heating greatly reduces humidity. This can easily be touched up (use a Home Concepts Touchup Kit) and is not considered a defect. Excessive humidity will cause expansion of the center panel which will result in shifting of rails and stiles of the door. This can be controlled by regulating humidity.
- End panels, due to being made of different materials, will not match the door of the cabinet. This is not considered a defect and is not covered under warranty.
- Painted Medium Density Fiberboard (MDF) doors display a color variance from the painted maple face frames and mouldings used in the same finish due to the MDF substrate material. This is not considered a defect and is not covered under warranty.
- Painted Medium Density Fiberboard (MDF) five-piece doors and drawer fronts will show joint lines.
- Any product that is exposed to moisture will show separation at the joints. This natural characteristic is excluded from warranty.
- Undue wetness and heat to the edges of laminate doors will cause delamination over time.
- Doors that are warped must be allowed to hang through one heating cycle, or 180 days, before a no-charge replacement will be considered.
- Some doors may warp slightly after being installed in a new home due to high humidity levels and in older homes due to low humidity levels. The door will usually return to its normal flat position after going through the heating cycle; however, cabinets need to be checked for proper installation and squareness. Cabinets improperly installed can be racked out of square. If cabinets are not properly installed, shimmed, or the floor is unlevel, the cabinet face frame may rack to the contour of the wall resulting in doors that appear off on a flat plane. The door will probably still be flat and not warped or racked. These problems can be greatly reduced with correct installation and humidity control.
- Variations in natural grains and finishes (especially noticeable in natural and light stain colors) are not considered defects.
- Scratches and changes in finish sheen resulting from bumps or abrasions during delivery, installation, and daily usage are not considered defects.

Even though great care and quality control standards exist in the manufacturing of these products, the above characteristics could possibly develop in your cabinetry. We recommend humidity control in your home for all products to reduce the possibility of wood movement and shrinkage.

CAUTION: During the cleaning cycle of self-cleaning appliances, we recommend that you remove the doors and drawers of all cabinets adjacent to and above the oven. The cleaning cycle generates heat that could affect the finish and surface of the cabinets. We recommend a Delamination Shield (Item Code: DS) be placed between free standing base ovens and adjacent base cabinets during cabinet installation. Wellborn Cabinet, Inc. is not responsible for any product defect that results from not following these procedures.

General Product Information

Wood base materials must be protected against both high and low humidity extremes as well as direct moisture since the wood used in them retains its hygroscopic properties despite the fact that it has been processed.

General Product Information (continued)

The Home Concepts brand by Wellborn Cabinet, Inc. reserves the right to continuous product refinement. Specification changes in design and materials may be introduced, as conditions require, without obligation to make changes to products previously manufactured. If a claim is filed after a product becomes obsolete, Wellborn Cabinet, Inc. reserves the right to honor the warranty by replacing the discontinued product with the current product that is closest to being equivalent to the original product. This replacement product may not perfectly match the original. On all product enhancements, the old style will no longer be available as of the effective date of change. Discontinued door styles and finishes will be available for replacement for six months from discontinue date; however, lead times will vary. Production will be run once per quarter. The warranty on any replacement product will extend for the balance of the original warranty.

Any wall cabinets greater than 36" wide are not recommended as stand alone cabinets without additional reinforcements above and beyond Home Concepts' installation manual guidelines. We also recommend that any stand alone cabinet, regardless of width, be reinforced with angle brackets to help support the weight of accessories that is added to cabinet interior. Wellborn Cabinet, Inc. will not warranty any cabinets that fall as a result of standing alone. If Home Concepts Dealer does not use the Home Concepts installation screws provided, dealer will be responsible for 100% cost to consumer purchaser.

Finishes

Paints

Many Wellborn Cabinet, Inc. products have paint applied to the face frames, doors, drawer fronts, and end panels. All laminate cabinets have painted face frames. Color will vary on laminate doors. Painted face frames and other painted products will eventually have visible cracking around the joint areas. These variations are considered the natural characteristics of the material in relation to their environment and are not covered under these warranties.

Painted Medium Density Fiberboard (MDF) doors display a color variance from the painted maple face frames used in the same finish due to the MDF substrate material. This is not considered a defect and is not covered under warranty. Painted MDF five-piece doors and drawer fronts will show joint lines. This is not considered a defect and is not covered under warranty.

Self-Applied Finishes

Wellborn Cabinet, Inc. makes no warranty on self-applied finishes. Any self-applied finishes to any Wellborn Cabinet, Inc. products are not covered under warranty.

General Information

It is the nature of wood to vary somewhat in color and grain characteristics. Sample products may not precisely reflect the natural grain and color found in Home Concepts cabinets. Exposure to sunlight, smoke, household chemicals and other environmental conditions will affect the color of the finish through time. Every wood species exhibits additional characteristics with age such as darkening of grain, pin holes and sap runs. Because of these influences, finish samples should not be used to represent the product beyond 12 months from date of manufacture. It is the Home Concepts Dealer's responsibility to keep samples current. It is the Home Concepts Dealer's responsibility to check that samples are marked correctly for accuracy of color and door profile before releasing for presentation.

This is the exclusive warranty of The Home Concepts brand by Wellborn Cabinet, Inc. and is in lieu of all other warranties. Except as set forth herein, Wellborn Cabinet, Inc. makes no other warranties, expressed or implied, including any implied warranty of merchantability or fitness for a particular purpose, with respect to the product. Furthermore, incidental or consequential damages resulting from the failure of this product are expressly excluded as remedies. Wellborn Cabinet, Inc. neither assumes nor authorizes any other person to assume for it any other liabilities in connection with the sale of its products except in the case of expressed warranties which may be issued in writing from time to time with respect to particular products. Except where a different expressed written warranty has been issued with respect to particular products, no warranty, expressed or implied, is intended to be provided by Wellborn Cabinet, Inc. to any person or persons other than the original consumer purchaser. Some states do not allow limitations on how long an implied warranty lasts or limitations or exclusions of incidental or consequential damages. Therefore, the above limitations and exclusions may not apply to you.

Penalty Clause Contracts: Wellborn Cabinet, Inc. will assume no liability whatsoever in any penalty clause contracts even if it appears that we are at fault in triggering such a penalty. All liability will be borne by the Dealer who chooses to be committed.

Home Concepts Dealers are responsible for reviewing all warranties and disclaimers with their consumer purchasers. Home Concepts Dealer responsibilities include management of warranty claims from the consumer purchaser. Wellborn Cabinet, Inc. advises the Home Concepts Dealer to require the consumer purchaser to sign the Statement of Understanding below, but has no liability should the Dealer fail to do so.

Home Concepts Customer/Dealer: Any individual or business that buys Home Concepts products directly from Wellborn Cabinet, Inc.

Consumer Purchaser: One who purchases Home Concepts products from a Home Concepts Customer/Dealer.

STATEMENT OF UNDERSTANDING

Being the consumer purchaser of the cabinetry discussed by the warranty on pages 31-33, I understand the Product Awareness Statements and Disclaimers as called out in this document.

CONSUMER PURCHASER SIGNATURE

DATE

HOME CONCEPTS DEALER SIGNATURE

DATE

Wellborn Cabinet Product Identification Information

Door Style: _____

Finish: _____

Dealer and Installer: _____

Date Purchased: _____

Notes:

Our Vision

The Wellborn Family will be the most valued provider of permanent home cabinetry designed for a lifetime of gracious living

Who We Are

Since 1961, Wellborn Cabinet, Inc., has been manufacturing quality kitchen and bath cabinetry in Ashland, Alabama. It all began in a small cabinet shop to build cabinets for the local markets. Since that time, Wellborn has become a state of the art manufacturing facility of over 1.8 million square feet that combines some of the most advanced technology systems in the industry along with over 60 years of acquired knowledge and experience in high quality cabinetry craftsmanship.



GREEN  CHOICE

Green Choice is About Taking Action

Environmental stewardship has been part of Wellborn's culture since its beginning. This has been proven through decades of actions, investments and practices. At Wellborn, we have recycling programs that utilize wood waste to generate power and steam and continue to lower VOC emissions through technology. We partner with our suppliers to improve their environmental programs. This is why you will find the KCMA Environmental Stewardship Program seal proudly displayed on our cabinetry. The Green Choice program ensures that you are purchasing a brand of cabinets from a company that takes conscious steps to protect and minimize the overall impact on our environment.



Installation instructions provided by Wellborn Cabinet, Inc., are intended to be used as a guide in the installation of our products. Wellborn Cabinet, Inc., is not responsible for the installations of individual installers.



WELLBORN

CABINET®

38669 Hwy. 77 • Ashland, Alabama 36251 • (256) 354-7151 • FAX (256) 354-7022 • wellborn.com



N4179
Copyright© May 2020
Printed Date June 2023
Effective Date March 27, 2023